

**PALMETTO ELECTRIC COOPERATIVE, INC.
METER SOCKET SPECIFICATIONS**

- 1) All Meter Sockets to be Ringless.
- 2) All Meter Sockets Must be UL Approved.
- 3) All Latches to be Stainless Steel.
- 4) Enclosure to be 14 gauge, galvanized steel.
- 5) Listed Dimensions are Minimums.

Landis+Gyr is now Talon.

EDITED ON 3/13/2023 RR

100 AMP SINGLE PHASE RESIDENTIAL - COMMERCIAL -TEMPORARY SERVICE

CONT. AMP RATING	SERVICE	CONNECTOR TYPE	W	DIMENSIONS (IN) H	D		HUB	NO. OF TERMINALS	BY PASS	ENCLOSURE MATERIAL
100	OH/UG	#8 – 2/0 Lay-In	8	11	3.3		2”/ Blank	4	NONE	GAL. STEEL
Durham	T-RS101B	#8 – 2/0	11	14	4.375					
Talon (Landis+Gyr)	UAT111-OG	#14 – 2/0	8	11.7	3.6					
Milbank	U7487-RL-TG	#8– 2/0	8	11.5	3.3125					
Milbank	U8435-XL-TG-HSP	# 6- 2/0	8	11.5	3.313					
GE	TSMR015CSGP	#8– 2/0	14.1	31.7	4.8					
GE	TSMR815CSFLFMG	#8 - 2/0	14.1	31.7	4.8					
GE	TSMR415CSCUGP	#8 - 2/0	14.1	31.7	4.8					

200 AMP SINGLE PHASE RESIDENTIAL SERVICE

CONT. AMP RATING	SERVICE	CONNECTOR TYPE	W	DIMENSIONS (IN) H	D		HUB	NO. OF TERMINALS	BY PASS	ENCLOSURE MATERIAL
200	OH/UG	3/8" STUD	11	20	4.5		2"/ Blank	4	NONE	GAL. STEEL
Durham	1001989		12	20	4.5					
Durham	UT-RS220A		13	15.125	4.9					
Milbank	U2986-XL		13	19	4.5					
GE	TSMR020CSGP		14.1	31.7	4.8					
GE	TSMR420CSCUGP		14.1	31.7	4.8					
GE	TSMR820CSFLFMG		14.1	31.7	4.8					
GE	TSMR2020CSCUFMG		14.1	34.4	4.8					
Talon	UAS878-XG UAS818-PGNM		13	14	5.1					

200 AMP SINGLE PHASE COMBINATION METER SOCKET/DISCONNECT FOR RESIDENTIAL SERVICE

COMBINATION METER SOCKET AND 200 AMP DISCONNECT ASSEMBLIES ARE VERY POPULAR AND MAY BE USED FOR MOBILE HOME OR HOUSE APPLICATIONS. THE COMBINATION ASSEMBLY MUST BE RINGLESS.
THE METER SOCKET PORTION OF THIS COMBO UNIT MUST MEET THE SPECIFICATIONS BELOW

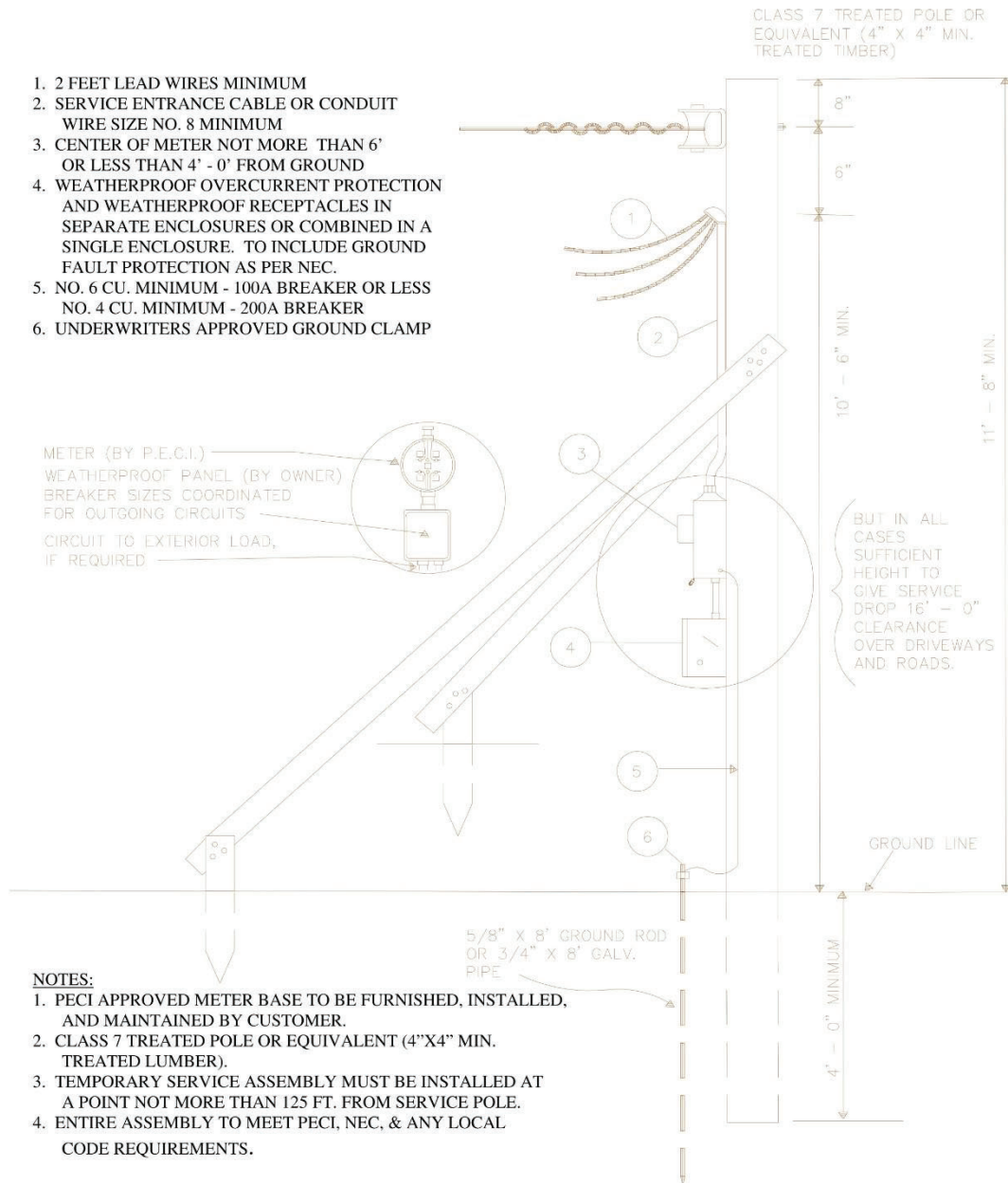
CONT. AMP RATING	SERVICE	CONNECTORS SIZE	W	DIMENSIONS (IN) H	D		HUB	NO. OF TERMINALS	BY PASS	ENCLOSURE MATERIAL
200	OH/UG	#6- 350 Lay-In	11	20	4.5		2"/Blank	4	NONE	GAL. STEEL
Square D	RC200SFMG	#6 – 300 Lay-In	13.06	23.03	4.67		2"/Blank	4 or 5	NONE	GAL. STEEL
Square D	RC816F200C	#6 – 300 Lay-In	14.37	35.13	4.67		2"/Blank	4	NONE	GAL. STEEL
GENERAC	RBU200A3	#6 – 350 Lay-In	17.3	42.5	6.3		2"/Blank	4	NONE	GAL. STEEL

200 AMP SINGLE PHASE COMMERCIAL SERVICE

CONT. AMP RATING	SERVICE	CONNECTOR TYPE	W	DIMENSIONS (IN) H	D		HUB	NO. OF TERMINALS	BY PASS	ENCLOSURE MATERIAL
200	OH/UG	3/8" STUD	11	19	4.8		2"/Blank	4	LEVER BYPASS WITH JAW RELEASE	GAL. STEEL
Durham	H4230C		16	27	5.625					
Talon (Landis+Gyr)	42504-025		13	19	5.1					
Milbank	U9865-RRL		13	28.25	4.875					

TEMPORARY SERVICE ASSEMBLY FROM OVERHEAD DISTRIBUTION

1. 2 FEET LEAD WIRES MINIMUM
2. SERVICE ENTRANCE CABLE OR CONDUIT
WIRE SIZE NO. 8 MINIMUM
3. CENTER OF METER NOT MORE THAN 6'
OR LESS THAN 4' - 0" FROM GROUND
4. WEATHERPROOF OVERCURRENT PROTECTION
AND WEATHERPROOF RECEPTACLES IN
SEPARATE ENCLOSURES OR COMBINED IN A
SINGLE ENCLOSURE. TO INCLUDE GROUND
FAULT PROTECTION AS PER NEC.
5. NO. 6 CU. MINIMUM - 100A BREAKER OR LESS
NO. 4 CU. MINIMUM - 200A BREAKER
6. UNDERWRITERS APPROVED GROUND CLAMP



DATE: March 5, 1990
APPROVED BY: Wilson D. Saleeby
REV: February 19, 2014 SHEET 1

MEMO # 5

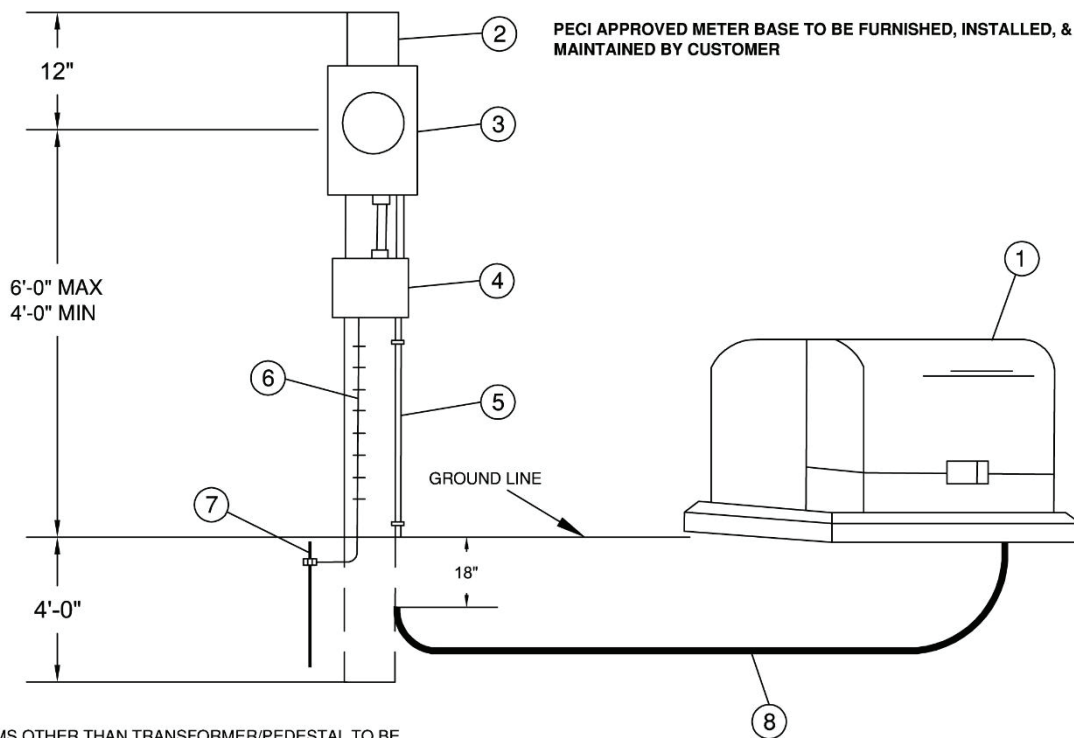
PALMETTO
ELECTRIC COOPERATIVE INC.
A Touchstone EnergySM Partner

TEMPORARY SERVICE INSTALLATION FROM UNDERGROUND DISTRIBUTION

"TYPICAL COMMERCIAL"

ITEM #:

1. PAD MOUNTED TRANSFORMER OR PEDESTAL
2. CLASS 7 TREATED POLE OR EQUIVALENT
(4"x4" MIN. TREATED TIMBER)
3. METER BASE (BY OWNER)
4. WEATHERPROOF OVERCURRENT PROTECTION AND
WEATHERPROOF RECEPTACLES IN SEPARATE ENCLOSURE
OR COMBINED IN A SINGLE ENCLOSURE
5. GALVANIZED IRON OR SCHEDULE 40 PVC CONDUIT
AND FITTINGS - MIN SIZE 1-1/4"
6. GROUND WIRE TO BE SECURELY ATTACHED TO STRUCTURE
NO. 6 CU. MINIMUM - 100A BREAKER OR LESS
NO. 4 CU. MINIMUM - 200A BREAKER
7. 5/8" x 8' GROUND ROD (GALVANIZED OR COPPER CLAD) WITH U.L.
APPROVED CLAMP
8. CABLE AND CONDUIT, IF APPLICABLE, PROVIDED AND INSTALLED BY
OWNER TO MEET NEC AND/OR LOCAL REQUIREMENTS



NOTES

1. ALL ITEMS OTHER THAN TRANSFORMER/PEDESTAL TO BE FURNISHED, INSTALLED, & MAINTAINED BY CUSTOMER
2. CUSTOMER TO INSTALL POLE NO CLOSER THAN 4 FEET FROM TRANSFORMER PAD OR PEDESTAL
3. WHERE SECONDARY PEDESTALS ARE AVAILABLE, THEY MAY BE USED TO CONNECT THE SERVICE POLE
4. CUSTOMER TO DIG FROM POLE TO APPROXIMATELY 1 FT FROM DOOR SIDE (RIGHT FRONT CORNER) OF TRANSFORMER PAD OR TOWARD HANDHOLE OR PEDESTAL AND PROVIDE 10' OF EXTRA WIRE TO BE INSTALLED & CONNECTED BY PECI PERSONNEL
5. ENTIRE ASSEMBLY TO MEET PECI, NEC, & ANY LOCAL CODE REQUIREMENTS
6. CALL SC811 BEFORE YOU DIG

DATE: July 23, 2014

APPROVED BY: Wilson D. Saleeby

REV:

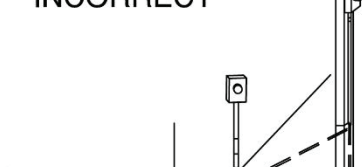
SHEET 1 OF 2

MEMO #6



TEMPORARY SERVICE INSTALLATION FROM UNDERGROUND DISTRIBUTION

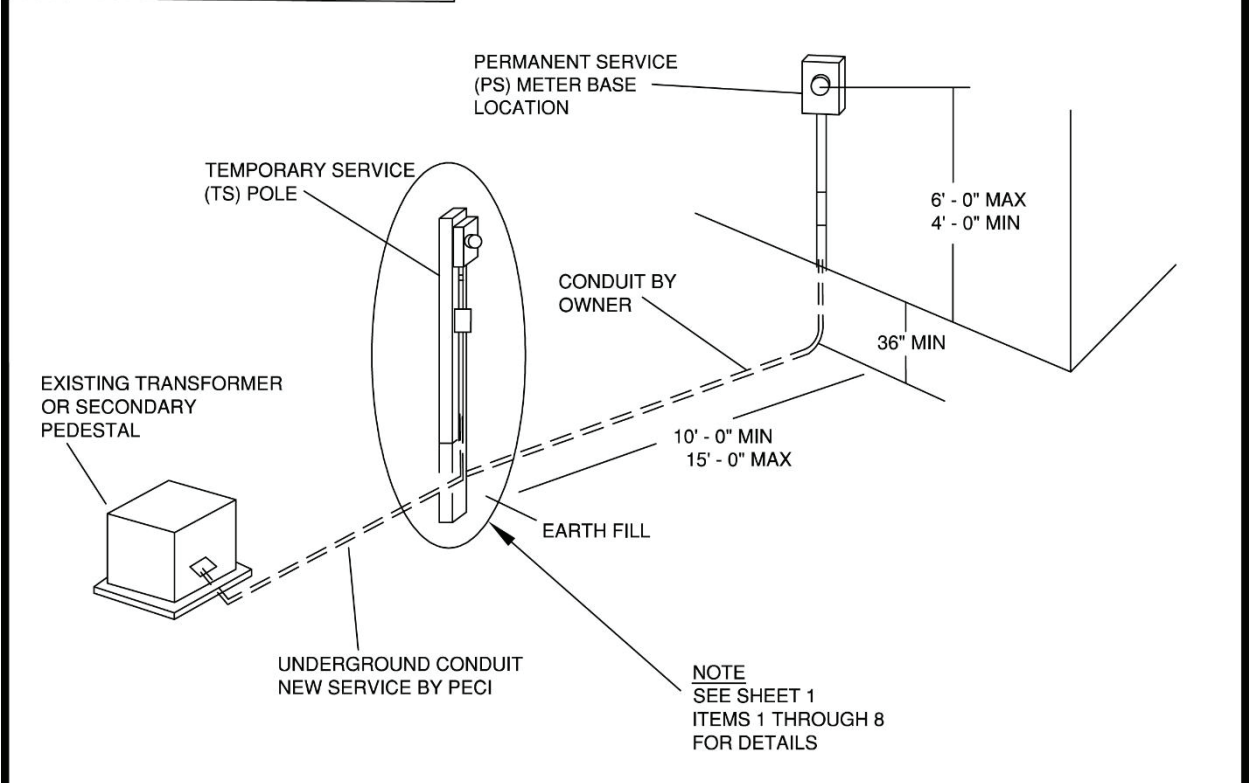
INCORRECT



"TYPICAL RESIDENTIAL"

CORRECT

CORRECT



NOTES

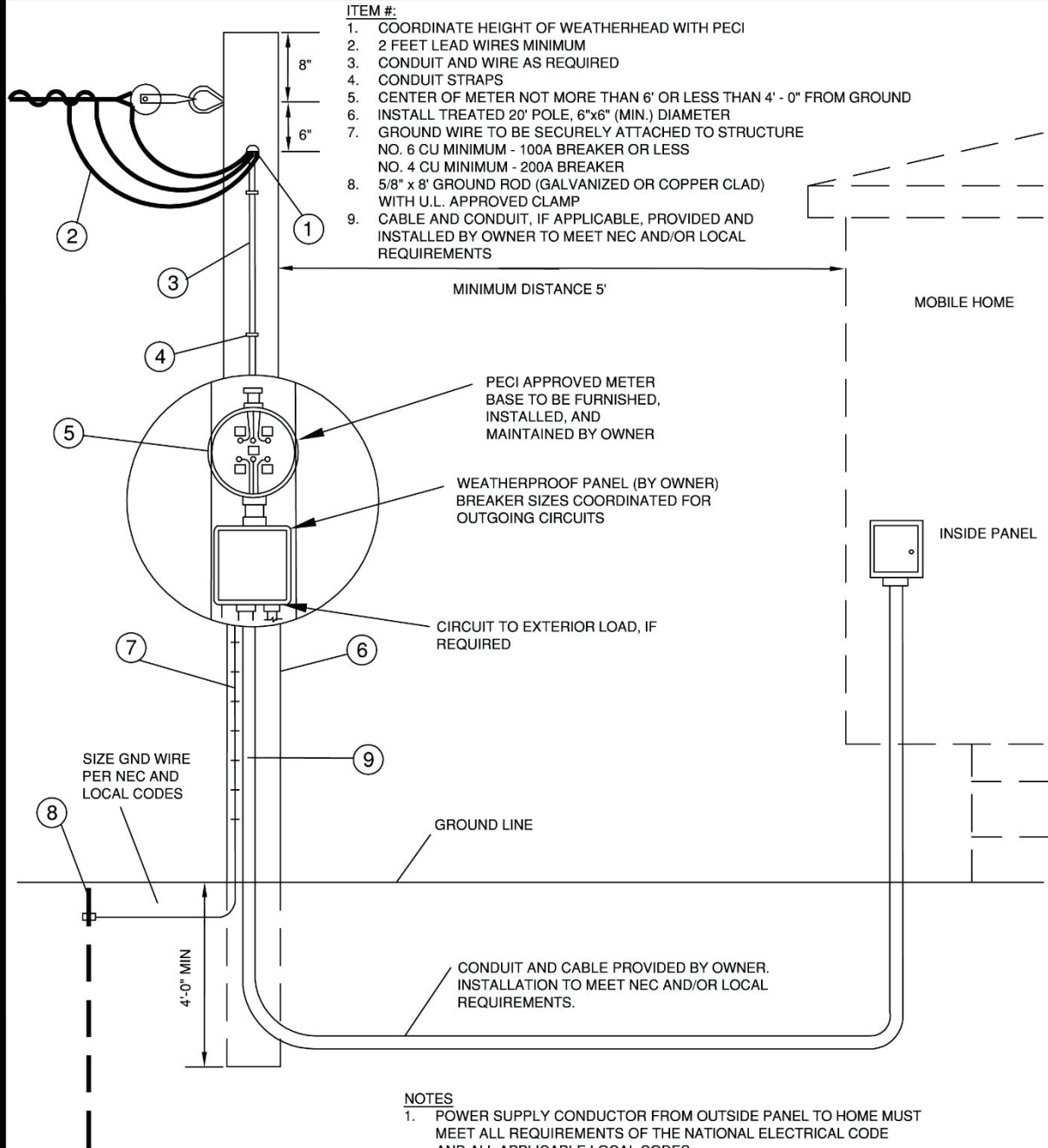
1. OWNER/DEVELOPER/ELECTRICIAN RESPONSIBLE FOR
INSTALLING GRAY SCHEDULE 40 PVC FOR ELECTRIC FROM
WALL TO TEMPORARY SERVICE POLE AS SHOWN
200 AMP PERMANENT SERVICE OR LESS, USE 2.5" PVC
300 AMP PERMANENT SERVICE OR GREATER, USE 3" PVC
2. TEMPORARY SERVICE POLE IS TO BE IN-LINE BETWEEN
TRANSFORMER/PEDESTAL AND PERMANENT SERVICE METER BASE

DATE: August 15, 2017
APPROVED BY: Wilson D. Saleeby
REV: SHEET 2 OF 2

MEMO #6



MOBILE HOME METER SERVICE POLE



NOTES

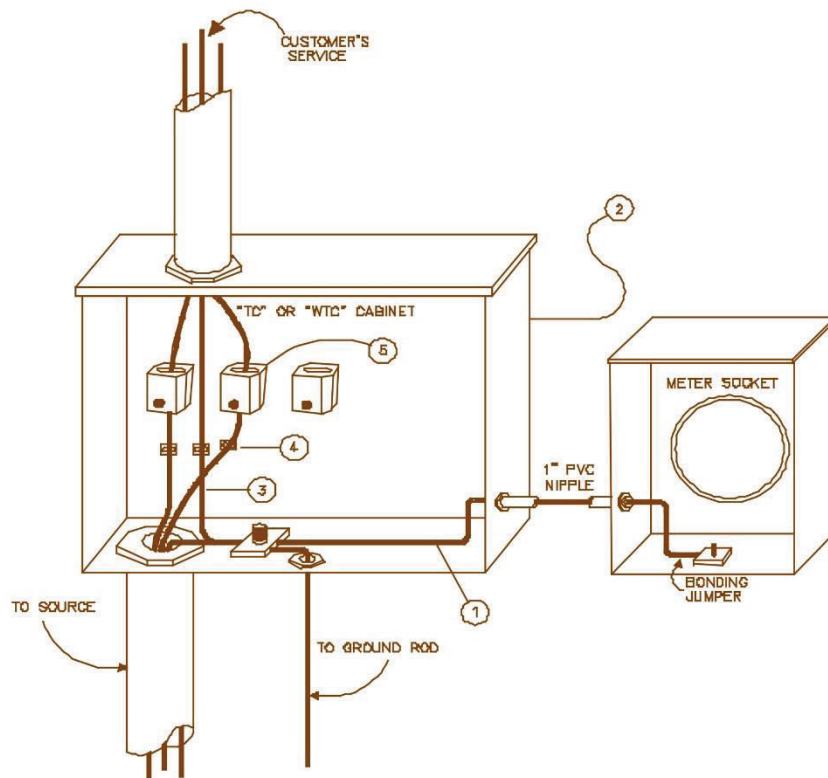
- POWER SUPPLY CONDUCTOR FROM OUTSIDE PANEL TO HOME MUST MEET ALL REQUIREMENTS OF THE NATIONAL ELECTRICAL CODE AND ALL APPLICABLE LOCAL CODES
- ENTIRE ASSEMBLY TO MEET PECI, NEC, AND LOCAL REQUIREMENTS
- DRAWING SHOWS TYPICAL METHOD FOR BURIED SERVICE THIS IS ONLY A GUIDE FOR INSTALLATION
- CALL SC811 BEFORE YOU DIG

DATE: March 30, 1998
APPROVED BY: Wilson D. Saleeby
REV: July 23, 2014 SHEET 1 OF 1

MEMO #7

1302APH103P1ALMETT01ec_insp_201129

RESIDENTIAL C. T. CABINET



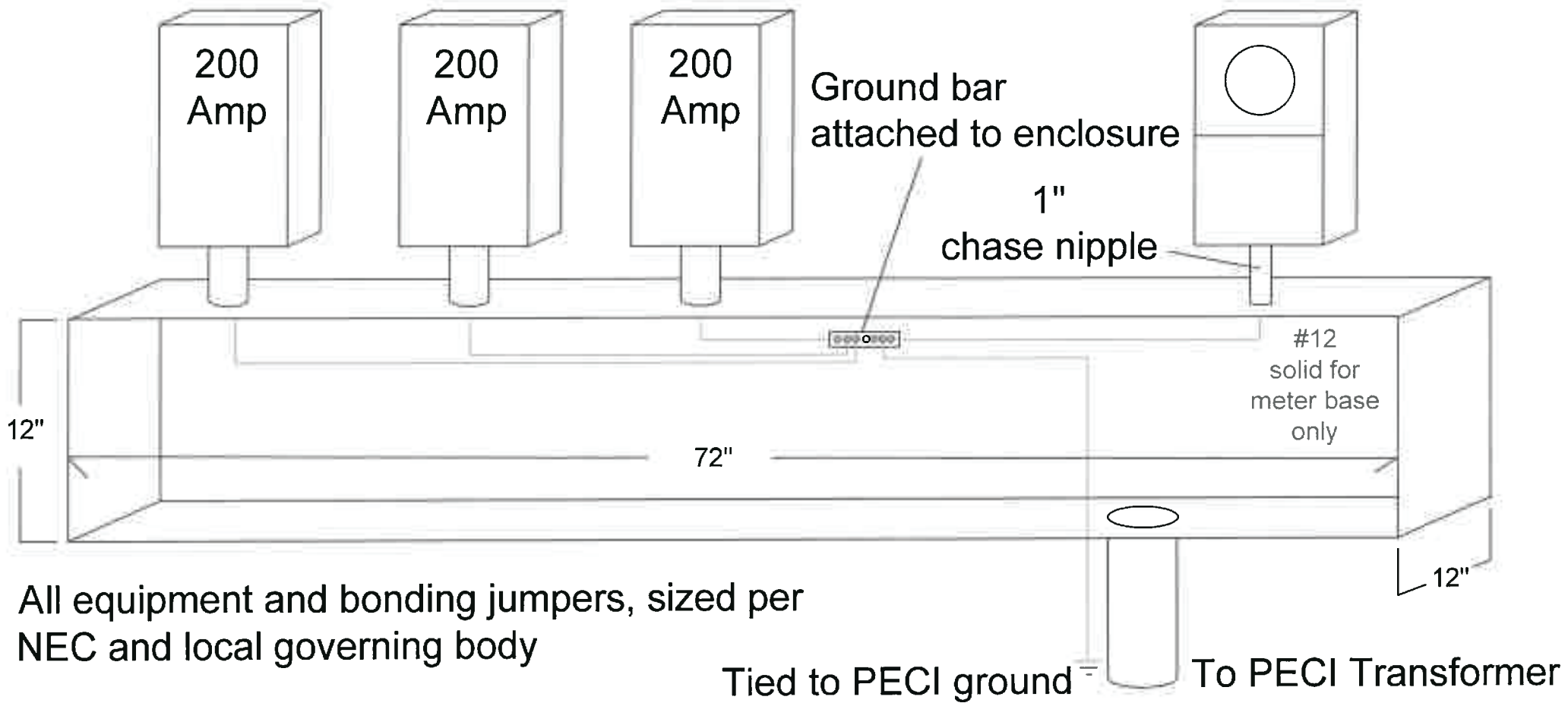
NOTES:

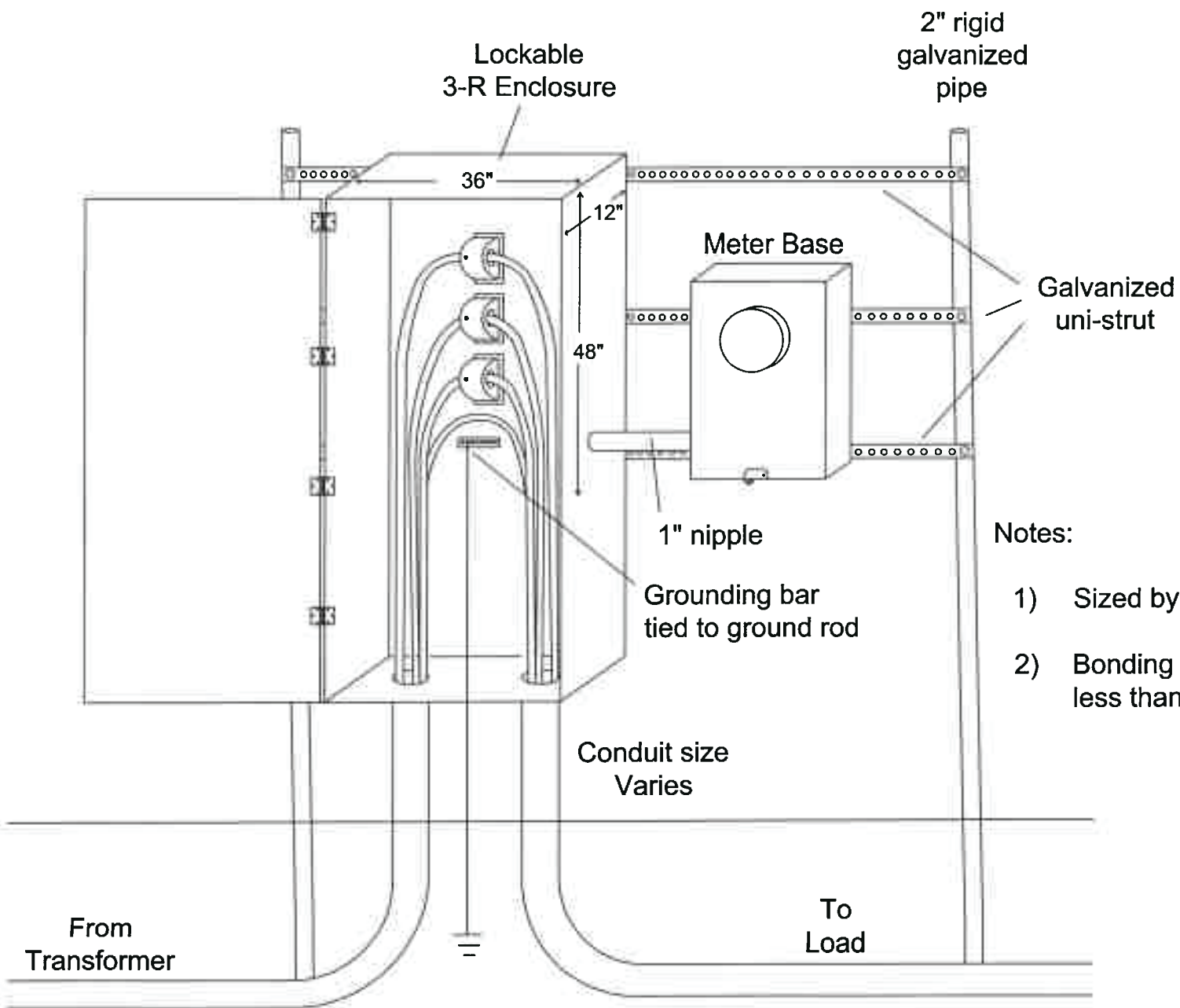
1. All metering cabinets and troughs to be bonded together with minimum #6 copper bonding wire.
2. C. T. Cabinets to be provided by owner/contractor. Minimum C. T. cabinet size is to be 24" x 24" x 12".
3. Both the owners service entrance conductors and the Cooperatives service cables are to be terminated in the cabinet.
4. Owner/contractor is responsible for providing Cooperative approved terminal blocks.
5. C. T. 's and meter socket to be provided by the Cooperative.
6. Entire assembly to meet PECEI, NEC, and local code requirements.

DATE: March 26, 1990
 APPROVED BY: A. Berl Davis
 REV: _____ SHEET 1

MEMO # 8

PALMIETTO
 ELECTRIC COOPERATIVE INC.
 A Touchstone Energy™ Partner

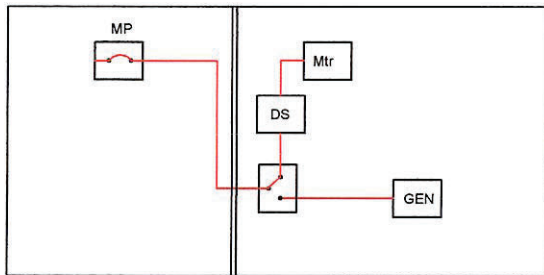
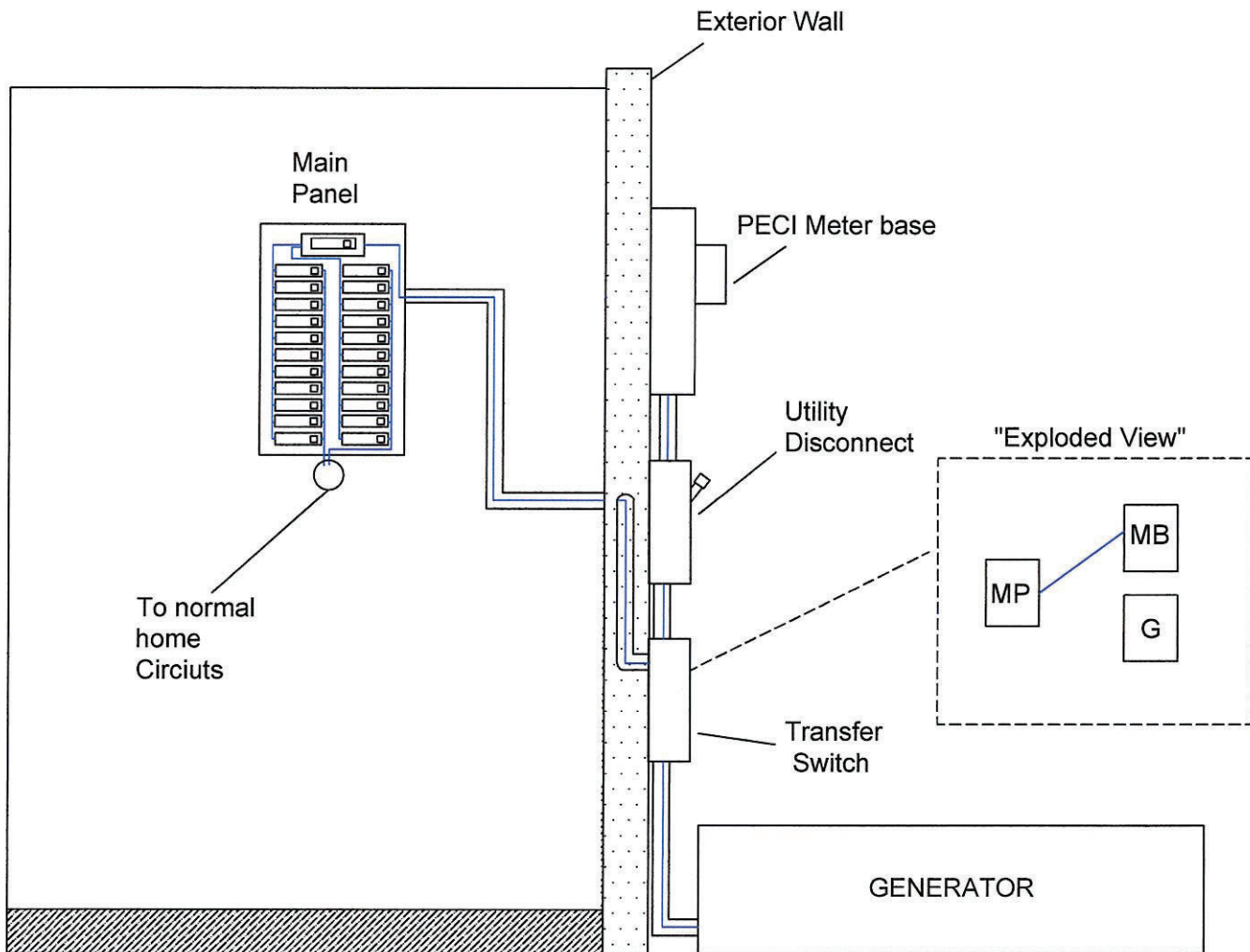




Notes:

- 1) Sized by NEC and local governing body
- 2) Bonding wire to extend to PEI if structure is less than 6' from transformer.

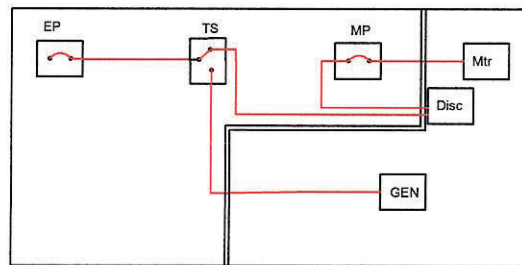
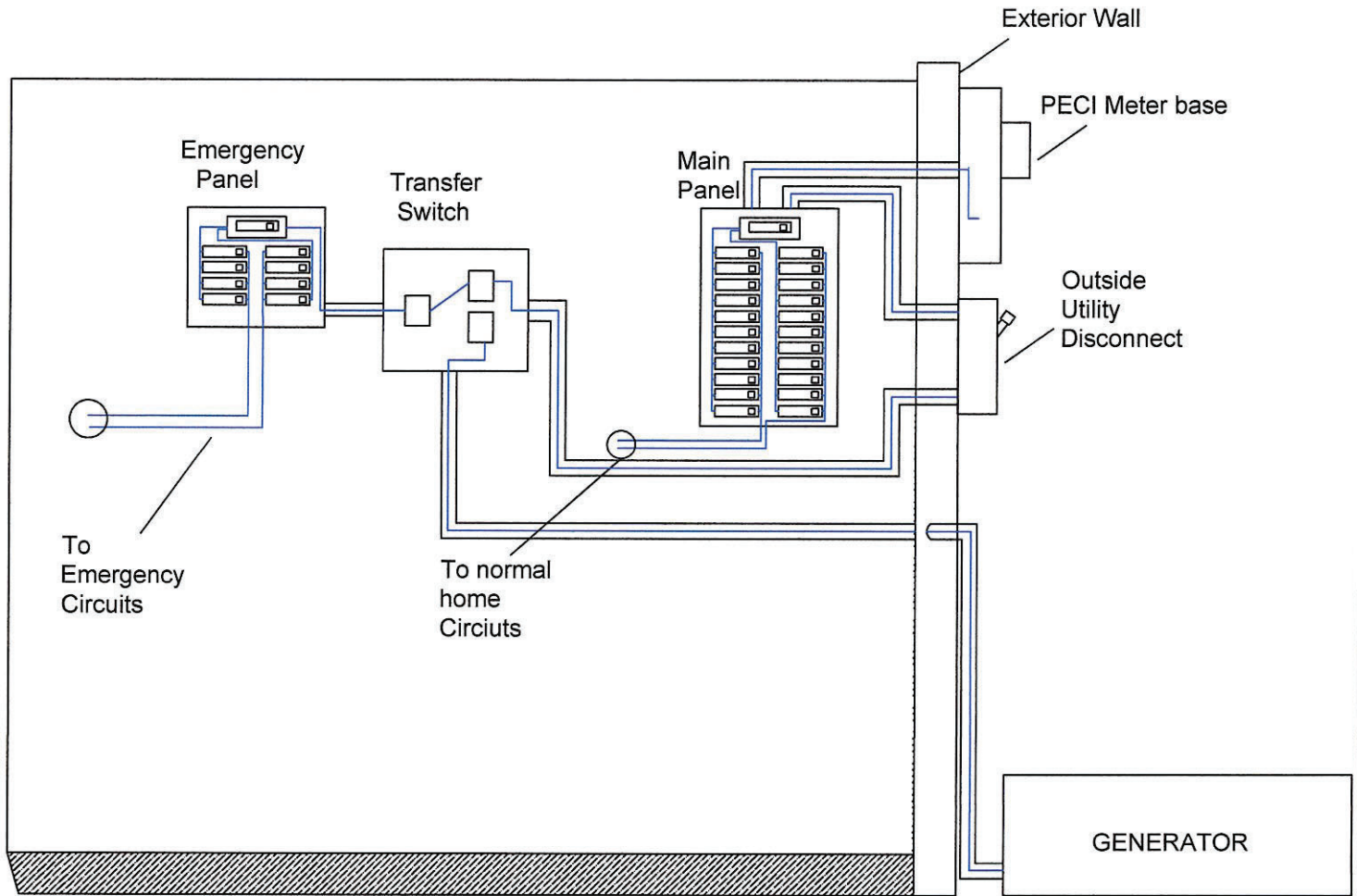
GENERATOR HOME



NOTES

1. Transfer Switch to be "Double Pole/Double Throw"
2. Transfer Switch to be Mechanically designed to prevent connecting both. The "Utility Source" & "Generator" in parallel.
3. Transfer Switch must be "Break before Make" type.
4. The Jurisdiction- having authority must inspect and approve installation.
5. Installation must comply with all pertinent codes & ordinances
6. Outside Utility disconnect must be visible break, lockable, & located within 10' of meter

GENERATOR EMERGENCY PANEL



NOTES

1. Transfer Switch to be "Double Pole/Double Throw"
2. Transfer Switch to be Mechanically designed to prevent connecting both. The "Utility Source" & "Generator" in parallel.
3. Transfer Switch must be "Break before Make" type.
4. The Jurisdiction- having authority must inspect and approve installation.
5. Installation must comply with all pertinent codes & ordinances
6. Outside Utility disconnect must be visible break, lockable, & located within 10" of meter

320 AMP SINGLE PHASE RESIDENTIAL / COMMERCIAL SERVICE

CONT. AMP RATING	SERVICE	CONNECTOR TYPE	W	DIMENSIONS (IN) H	D		HUB	NO. OF TERMINALS	BY PASS	ENCLOSURE MATERIAL
320	OH/UG	3/8" STUD	15	31	5.0		4" /Blank	4	LEVER BYPASS WITH JAW RELEASE	GAL. STEEL
Durham	T-H4330		15	36.625	5.6875					
Talon (Landis+Gyr)	48104-02RG		16	31	5.0					
Milbank	U2448-X		17.75	34.125	6.5					
Milbank	U5059-X-2/200-K3L		15	42.44	4.84					
GE	TSDR830CFCUGP		30.72	33.11	6.49					
GE	TSDR840CFCUGP		30.72	33.11	6.49					
Midwest	(UG) RS45508C		31	33	6.125		NA			
RONK	MSB320LC		20.375	43.375	5.563					

200 AMP POLYPHASE **120-208 volts** RESIDENTIAL / COMMERCIAL SERVICE

CONT. AMP RATING	SERVICE	CONNECTOR TYPE	W	DIMENSIONS (IN) H	D		HUB	NO. OF TERMINALS	BY PASS	ENCLOSURE MATERIAL
200	OH/UG	3/8" STUD	13	19	4.8		3"/ Blank	7	LEVER BYPASS WITH JAW RELEASE	GAL. STEEL
Durham	T-H7230		16	27	5.625					
Talon (Landis+Gyr)	42507-025		13	19	5.2					
Milbank	U9761-RRL		13	28.25	4.875					
Milbank	U4701-RXL		13	19	4.844					

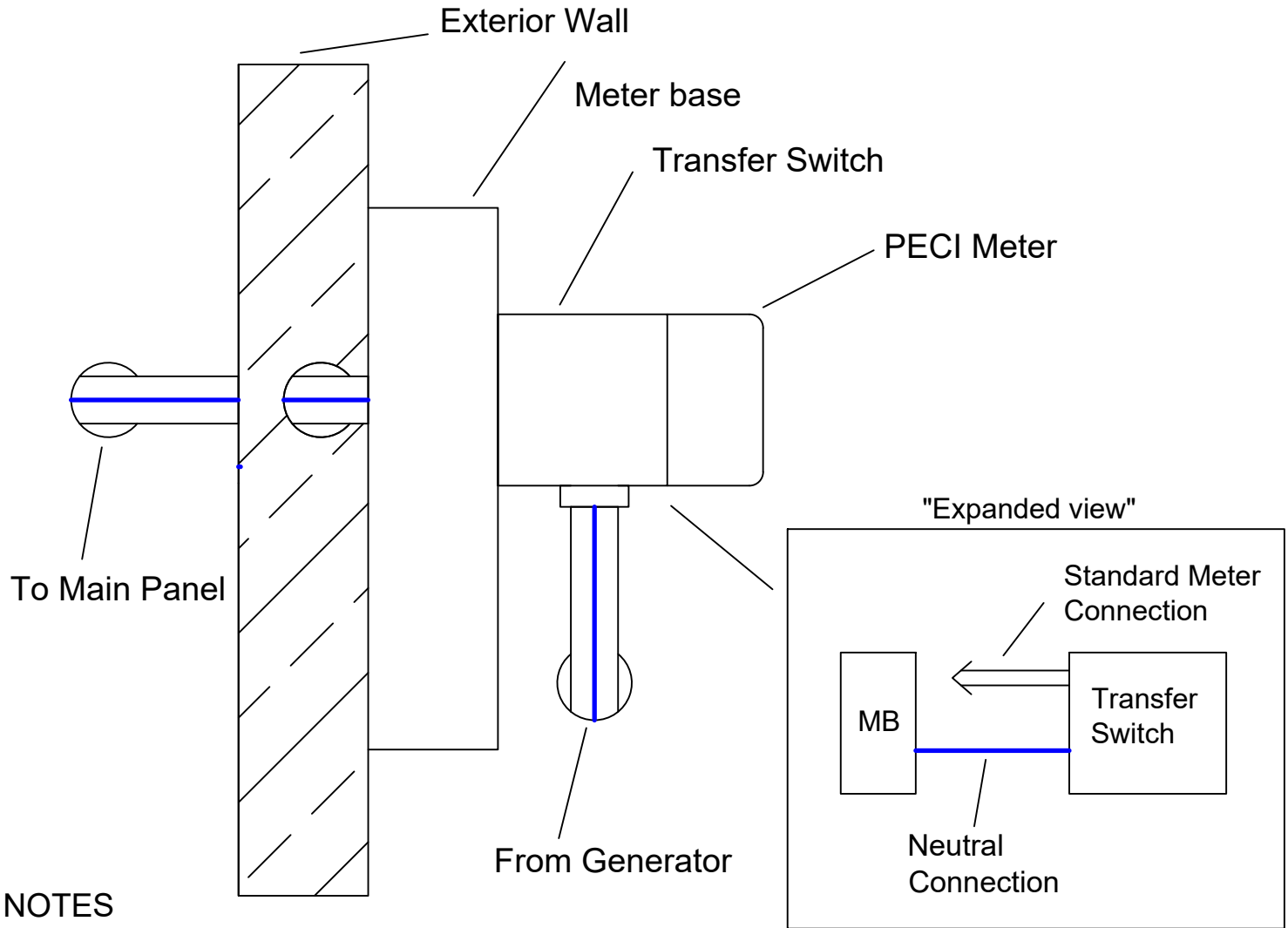
320 AMP POLYPHASE RESIDENTIAL / COMMERCIAL SERVICE

CONT. AMP RATING	SERVICE	CONNECTOR TYPE	W	DIMENSIONS (IN) H	D		HUB	NO. OF TERMINALS	BY PASS	ENCLOSURE MATERIAL
320	OH/UG	3/8" STUD	19	34	6		4" /Blank	4	LEVER BYPASS WITH JAW RELEASE	GAL. STEEL
Durham	T-H7330		20	39.875	6.5					
Landis+Gyr	48707-02		20	34	6					
Milbank	U2594-X		19	34.125	6.5					

200 AMP POLYPHASE **480 volts** COMMERCIAL SERVICE Disconnect on Source-Side of Meter Base

CONT. AMP RATING	SERVICE	CONNECTOR TYPE	W	DIMENSIONS (IN) H	D		HUB	NO. OF TERMINALS	BY PASS	ENCLOSURE MATERIAL
200	OH/UG	3/8" STUD	13	19	4.8		3" / Blank	7	LEVER BYPASS WITH JAW RELEASE	GAL. STEEL
Durham	1007371		13.5	35	5.75					

GENERATOR METER BASE TRANSFER SWITCH



NOTES

1. Transfer Switch to be mechanically designed to prevent connecting both the "Utility Source" & "Generator" in parallel.
2. Transfer Switch Must be 'Break Before Make" type.
3. Installation must comply with all pertinent codes, ordinances, and manufacturer specification.
4. Device should be pre-approved by the utility before purchasing or requesting installation
5. Limited to 240V single phase services 400A or less.
6. Device must be installed by homeowner or homeowners qualified representative after service is disconnected by PEI personnel.
7. Only PEI personnel are authorized to open a meter base and disconnect/connect a meter.
8. Splices, taps, or pass thru conductors will not be permitted in the meter base.
9. PEI reserves the right to remove the device at anytime for any reason.

DATE: 06/11/2025

APPROVED BY: Wilson D. Saleeby

REV: SHEET 1 OF 1

MEMO #27